

# DEALER BULLETIN

June 4, 2010

**BULLETIN NO.:** 400/200S-310

**TO:** ALL DISTRIBUTORS, & DEALERS

**SUBJECT:** Custom Andersen® 400 Series Perma-Shield® Casement Bow Windows







**EFFECTIVE:** June 1, 2010

### Overview:

Andersen is pleased to announce the availability of Custom 400 Series Perma-Shield® casement bow windows in Intelligent Quote (iQ) software release version 10.1. Custom Perma-Shield casement bow windows are available in 3, 4, 5, 6, and 7 units wide and in 1/8" increments (Height and Width).

### Product Details:

Please see the minimum and maximum sizing table below. Options and accessories are the same as single unit custom casements. (See Dealer Bulletin PSW – 309)

Custom Size Table for Bow Window Rough Opening Dimensions (Available in 1/8" increments from Minimum to Maximum Size)							
	Values below are listed in inches						
	Width		x	Height		Calculated Projection	
	Minimum	Maximum		Minimum	Maximum	Minimum	Maximum
3 Wide Bow		52 1/2	--- 73 5/8	x	26 1/8	--- 73 7/8	4 3/8 --- 5 5/8
4 Wide Bow		69 1/2	--- 97 3/8	x	26 1/8	--- 73 7/8	7 3/8 --- 9 7/8
5 Wide Bow		85 7/8	--- 120 3/8	x	26 1/8	--- 73 7/8	10 3/8 --- 14 1/8
6 Wide Bow		101 5/8	--- 142 1/2	x	26 1/8	--- 73 7/8	14 7/8 --- 20 5/16
7 Wide Bow		116 5/8	--- 163 1/2	x	26 1/8	--- 73 7/8	19 3/16 --- 26 7/16

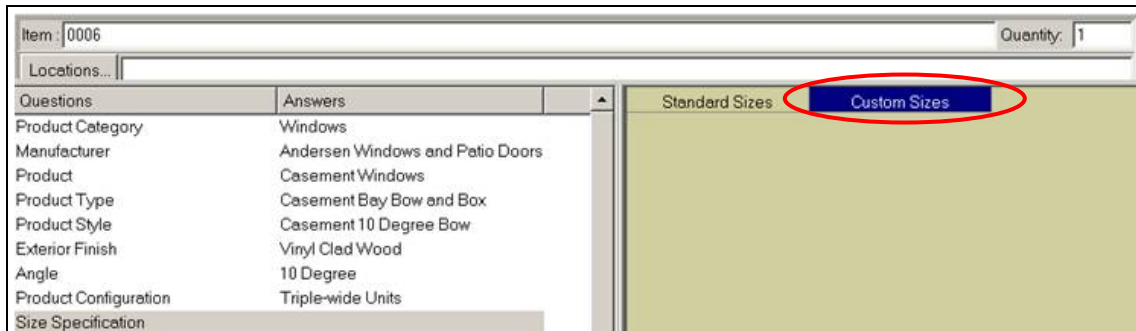
Note: Illustrations above reveal common venting configurations. These combinations may be configured to right venting, left venting, or stationary units.

**Pricing:**

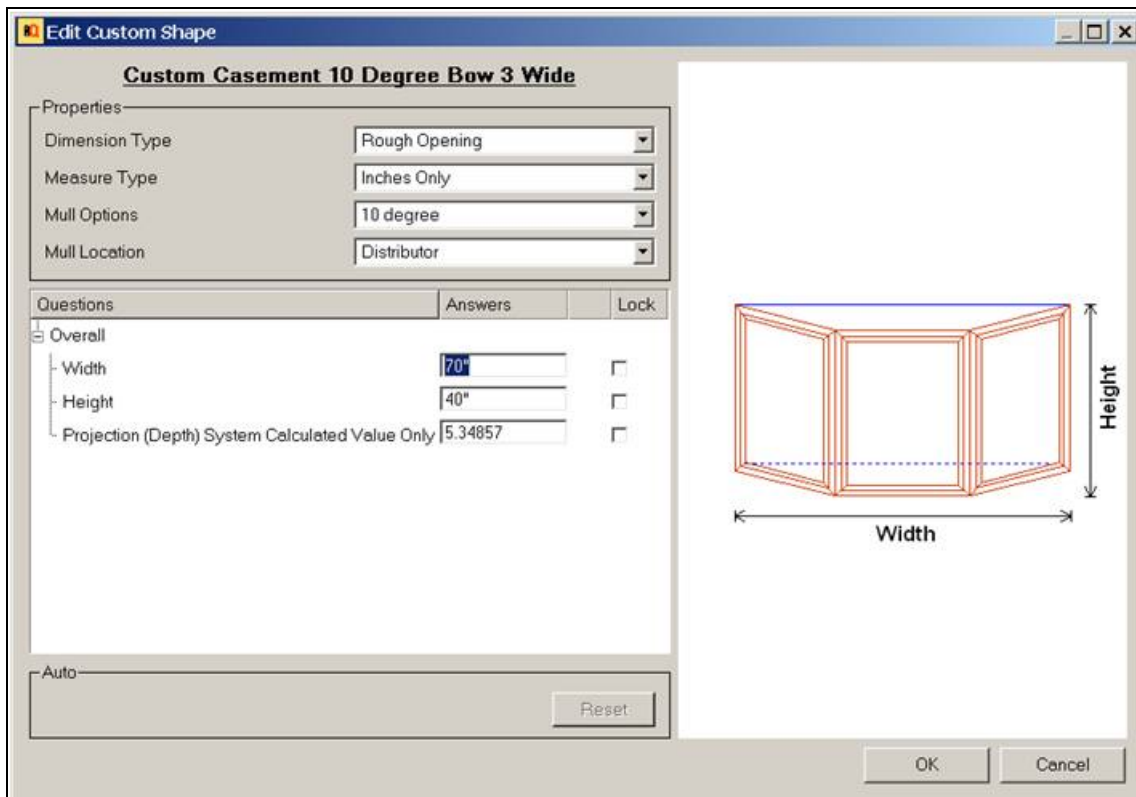
Custom 400 Series Perma-Shield® casement bow windows will be base price plus 25% up charge.

**Quoting:**

Custom sized bow windows can be quoted using iQ software version 10.1. When quoting bows, you will be prompted to choose either ‘standard’ or ‘custom’. This is shown below.



After selecting ‘Custom Sizes’ you will be prompted with the following window:



Input rough opening dimensions, select OK, and continue through the quoting process.