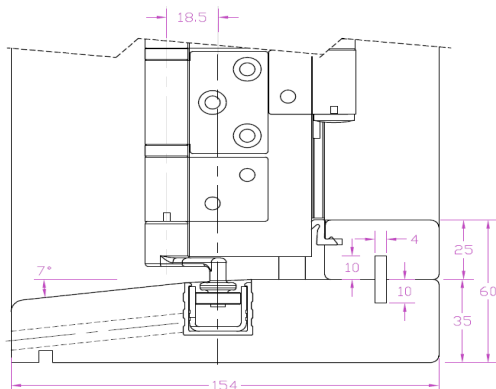
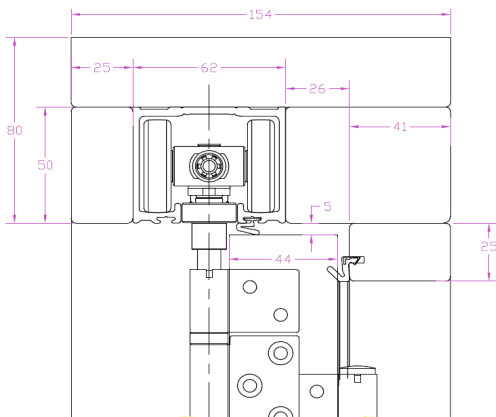


Black

MILLWORK CO., INC.

Introduction of the NEW Bi-Fold Door Range. Quality as Standard, Not an Option.



Manufactured from Quality knot free Laminated / Engineered Baltic Pine. With hardwood sill.

Doors are supplied fully finished in White as standard RAL 9010, with options for any RAL colour.

Also units can be stained / lacquer finished.

Also available in solid Oak and Ash.

Units are Glazed as standard with Pilkington Toughened Low E 18mm Double Glazing with 90% Argon Gas Fill, with Upgraded Thermix Spacer Bar. U Value 1.5.

Centor Europe Hinges. Winlock multipoint locking mechanism and furniture, Polished Chrome key locking as standard. With options for White, Anodised Silver, Polished Gold, Anodised Gold and Black. Custom RAL colours upon request.

Units come with extensive Warranties, 10 years sealed units and hardware, 5 years paint finish, 10 years on timbers.

Description

Bi-Fold Door units. Fully Finished in White with Remmers primer ZW-400 and finish top coat DW-690.
Frame 154mm x 60 mm

Frame & Panels Materials

Engineered Baltic Pine (knot free). Hardwood sill.

Preservation

All timber components are pressure impregnated with Remmers Induline GL-350 to prevent against insect and fungal attack.

Factory Finish

Doors are supplied fully finished in White as standard RAL 9010, with options for any RAL colour.

Also options for dual colour frames, or painted exterior varnish interior, or stain / lacquer finish interior and exterior.

Performance

The Glazing has been tested to EN1279.

Furniture

Supplied Polished Chrome as standard, options of White Anodised Silver, Polished Gold, Anodized Gold and Black. Custom RAL colours upon request.



Weatherseal

Schlegel weather strips.

Glazing

Doors are factory glazed with Pilkington Toughened Low E glazing with upgraded Thermix Spacer and 90% Argon Gas fill, 18mm (4-10-4) tested to EN1279 U Value 1.5.

Sills

Hardwood sills.

Mechanisms

Centor Europe Rollers and Hinges. Winlock multipoint locking mechanism and furniture.

Sizing

max opening: 16m (8 panels each direction)
max panel height: 2400mm (required extra hinges and drop bolts)
min panel height: 1900mm
max panel width: 1000mm
min panel width: 700mm
max panel weight 80kg
panel thickness : 44mm

Grilles

FDL, 19mm profile.

Guarantees

10 years on sealed units and hardware, 5 years on paint finish against fading, 10 years on timber portions.



Black Millwork Co Inc

Andersen House
Dallow Street
Burton on Trent
Staffordshire
DE14 2PQ

Phone: 01283 511122

Fax: 01283 510863

E-mail: info@blackmillwork.co.uk

Web: www.blackmillwork.co.uk

